



Class :-10th

Sub:- Science-II

Name of Student :-

Marks :- 25

Time:-1.30hr

Q1.

M=3

A. Choose the correct alternatives.

- i) In humans, sperm production occurs in the organ _____
(a) prostate gland (b) ovaries (c) testes (d) cowper's gland.
- ii) Pranav and Preeti are twins in your class, they belongs to _____
(a) Monozygotic (b) dizygotic (c) siamese (d) none of the above.
- iii) Pregnant mother supplies nourishment to her foetus through _____
(a) placenta (b) ovaries (c) uterus (d) breasts.

B. Write whether the following statement's are true or false

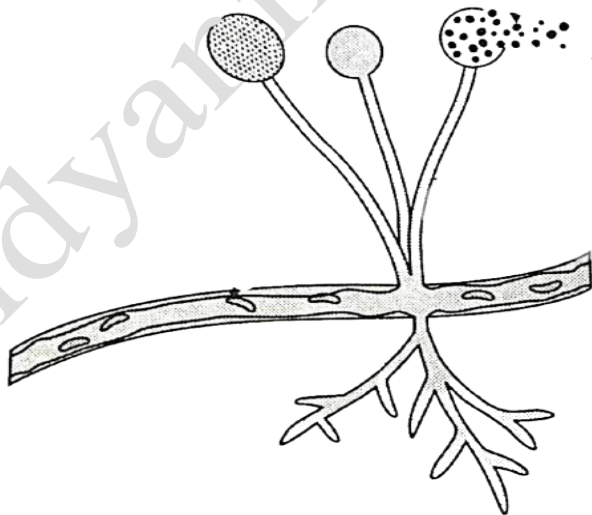
M=2

- i) Pollen tube reaches the zygote via style
- ii) During favourable period amoeba undergoes multiple fission.

Q.2. Answer the following questions. (Any-3)

M=6

- i) Give the names of different glands associated with male reproductive system
- ii) Identify the diagram and explain the mode of reproduction:



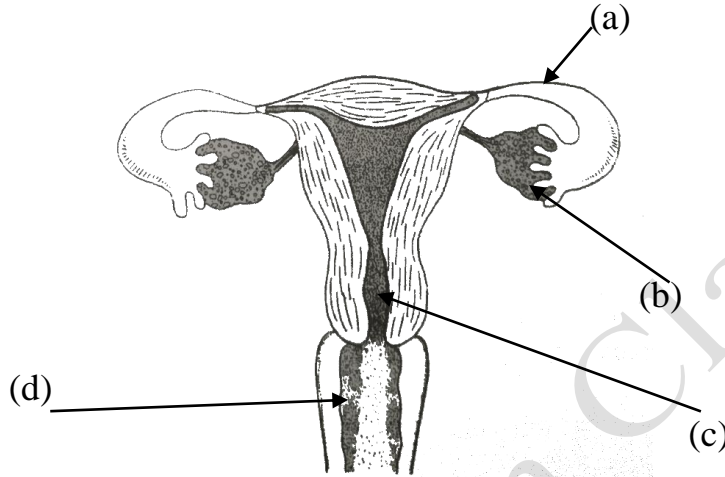
iii) Explain the concept of IVF:

iv) Distinguish between sexual and asexual reproduction.

Q.3. Answer the following questions. (Any-3)

M=9

- i) Explain 'Binary fission' in detail.
- ii) What is menstrual cycle? Describe it in brief.
- iii) Identify the labelled part's (a,b,c,d) and write the function of each.



- iv) Gender of child is determined by the male partner of couple. Explain with reason whether this statement is true or false.
- v) Give reason: Older mothers have greater chance of conceiving abnormal children.

Q-4. Answer the following question. (Any-1)

M=5

- i) Explain with the help of diagram, sexual reproduction in plants.
- ii) Describe the human male reproductive system with the help of neat and well labelled diagram.